



# HOUSEHOLD WASTE COLLECTION

## NOTICE

### **MATERIALS REFUSED IN THE WASTE AND LARGE ITEMS COLLECTION**

In an effort to reduce our ecological footprint and the impact on our public finances, we are redoubling our efforts to significantly reduce the amount of waste that, until now, has gone to landfill. The collection of household waste and large items does not include the following items that may be accepted at the ecocenter or in specific municipal collections (\*).

**HERE ARE SOME EXAMPLES OF WHAT IS NOT ACCEPTED IN TUESDAY'S COLLECTIONS:**

#### **Polystyrene and plastic**

(food packaging, packaging or construction)



#### **\*Cardboard / paper**

(boxes, wrapping paper, paper)

#### **Construction materials / excavation materials**

(ex. : wood, treated wood, plywood, drywall, moldings, ceramic, insulation, pipes, concrete, etc.)

#### **Halocarbons**

(refrigerators, freezers, air conditioners, dehumidifiers etc.)

#### **Tires**

(with or without rims)

#### **Asphalt shingles**

#### **Hazardous household waste**

(aerosols, adhesives, fuel, oils, chemicals etc.)

#### **Paint, light bulbs, batteries, cells**

#### **Soil, rocks, gravel**

#### **Electronics**

(televisions, computers, printers, cellular phones etc.)

#### **\*Green waste**

(grass, weeds, plants and flowers)

#### **\*Organic waste**

(food waste, napkins, tissues)

#### **Wood**

(logs, branches, trunks, stumps)

**Vaudreuil-Soulanges ECOCENTRES 450 455-5434**



CUT and KEEP

# LOCAL ECOCENTRES

## **Vaudreuil-Dorion (2800, Henry-Ford Street, Vaudreuil-Dorion)**

APRIL 1 TO NOVEMBER 30

Monday: Closed

Tuesday to Friday: 8 a.m. to 5 p.m.

Saturday and Sunday: 9 a.m. to 4 p.m.

All materials accepted at this service point:

Adhesives, sprays, paint strippers, epoxies, solvents•Light bulbs, fluorescents and compact fluorescents•Cellular devices and pagers•Appliances containing refrigerants (refrigerators, freezers, air conditioners, cellars, water chiller...)•Textile articles (sheets, blankets, etc.)•Asphalt, concrete, cement, sand, gravel, stone, rocks (only)•Other large items (carpets, pool covers, temporary shelters, fabrics, etc.)•Other construction materials (ceramic, porcelain, melamine, rubber, polystyrene, etc.)•Barbecues•Asphalt shingles•Batteries over 5 kg (automobiles, motorcycles, nautical vehicles)•Used bicycle or bike•Wood, treated wood, plywood, wood furniture, sawdust, wood shavings, wooden pallet and floor, mouldings•Propane and compressed gas tanks•Bricks•Flat and corrugated cardboard boxes•Liquid and powder ink cartridges•Cassettes, CDs, DVDs, disks•Wax (for floor, furniture, car)•Electronic components•Degreasers•Clothing depot (outdoor donation boxes)•Household appliances (stoves, dishwashers, washers, dryers, etc.)•Bulky metal containers: tanks, appliances, power tools, etc.•Handheld fire extinguishers•Scrap metal•Electrical wires, sockets, switches, lights, Christmas lights•Furnaces•Drywall, plaster, fibro cement, baked clay•Oils, oil filters and antifreeze, coolants•Mattresses and box springs•Insulating materials•Mercury (thermometers, barometers, thermostats)•Metal, steel, aluminum, copper, iron, etc.•Furniture (couches, sofas, armchairs, wardrobes, tables, chairs, etc.)•Computers, tablets, printers and peripherals•Tools (drills, benches, hammers ...)•Paints and their containers (primers, primers, stains, varnishes)•Pesticides•Small electrical appliances (coffee makers, toasters, dryers ...)•Small engines (mowers, snowblowers, generators ...)•Batteries and batteries weighing less than 5 kg•Hard plastic, fibreglass, vinyl, acrylic•Number 6 plastic, polystyrene•Tires with or without rims•Pool products, chlorine•Cleaning and maintenance products•Propane, turpentine, varsol, gasoline, fuel, thinners•Water heater tanks•Styrofoam (food packaging, glass, dishes, egg carton, small yogurt container)•Styrofoam (furniture packaging, electronic products packaging)•Styrofoam insulation•Audio/video systems and video games•Phones and answering machines•Televisions and display devices•Flat glass (e. g. mirrors, windows)•Clothing, shoes and accessories

## **Pincourt (750, Olympique Boulevard, Pincourt)**

ALL YEAR

Monday to Thursday: Closed

Friday: 8 a.m. to 4 p.m.

Saturday: 9 a.m. to 4 p.m.

Sunday: Closed

All materials accepted at this service point:

Light bulbs, fluorescents and compact fluorescents•Asphalt, concrete, cement, sand, gravel, stone, rocks (only)•Other large items (carpets, pool covers, temporary shelters, fabrics, etc.)•Other construction materials (ceramic, porcelain, melamine, rubber, polystyrene, etc.)•Wood, treated wood, plywood, wood furniture, sawdust, wood shavings, wooden pallet and floor, mouldings•Bricks•Drywall, plaster, fibro cement, baked clay•Mattresses and box springs•Insulating materials•Furniture (couches, sofas, armchairs, wardrobes, tables, chairs, etc.)•Paints and their containers (primers, primers, stains, varnishes)•Batteries and batteries weighing less than 5 kg•Hard plastic, fibreglass, vinyl, acrylic•Number 6 plastic, polystyrene•Styrofoam (food packaging, glass, dishes, egg carton, small yogurt container)•Styrofoam (furniture packaging, electronic products packaging)•Styrofoam insulation•Flat glass (e. g. mirrors, windows)

For more information consult the list of accepted materials at [www.tricycle-mrcvs.ca](http://www.tricycle-mrcvs.ca) or call 450 455-5434 to contact the Info-Écocentre line.

# INFO TERRASSE

FALL 2020 - WINTER 2021



*Picture: Danny Lauzon*



**MUNICIPALITY OF  
TERRASSE-VAUDREUIL**

74, 7<sup>th</sup> Avenue  
Terrasse-Vaudreuil QC  
J7V 3M9

Telephone: 514 453-8120  
Fax: 514 453-1180

[info@terrasse-vaudreuil.ca](mailto:info@terrasse-vaudreuil.ca)

**Subscribe to our Alert system by email at [www.terrasse-vaudreuil.ca](http://www.terrasse-vaudreuil.ca)**



YOU CAN REACH THE MAYOR BY EMAIL AT :  
[michel.bourdeau@terrasse-vaudreuil.ca](mailto:michel.bourdeau@terrasse-vaudreuil.ca)

## Table of contents

### ADMINISTRATION

Pages 2-5

### BY-LAWS

Pages 6-8

### PUBLIC SAFETY

Pages 9-11

### PUBLIC WORKS

Page 12

### ENVIRONMENT

Pages 13-16

### HEALTH / WELL BEING

Page 17

### URBAN PLANNING / PERMITS

Pages 18-19

### RECREATION / CULTURE

Pages 20-21

## RAPPORT DU MAIRE SUR LES FAITS SAILLANTS DU RAPPORT FINANCIER ET DU RAPPORT DE L'AUDITEUR INDÉPENDANT POUR 2019

Conformément aux dispositions de l'article 176.2.2 du Code municipal du Québec, en cette séance ordinaire du conseil municipal du 9 juin 2020, je fais rapport aux citoyens de Terrasse-Vaudreuil des faits saillants du rapport financier et du rapport de l'auditeur indépendant, pour l'exercice financier se terminant le 31 décembre 2019, tel que vérifié par la société de comptables professionnels agréés Goudreau Poirier inc. Ce rapport sera diffusé sur le territoire de la municipalité.

### Faits saillants du rapport de l'auditeur indépendant, Goudreau Poirier inc.

*« Nous avons effectué l'audit des états financiers consolidés de la Municipalité de Terrasse-Vaudreuil (< l'entité >), qui comprennent l'état consolidé de la situation financière au 31 décembre 2019, et les états consolidés des résultats, de la variation des actifs financiers nets (de la dette nette) et des flux de trésorerie pour l'exercice terminé à cette date, ainsi que les notes complémentaires, y compris le résumé des principales méthodes comptables.*

*À notre avis, les états financiers consolidés ci-joints donnent, dans tous leurs aspects significatifs, une image fidèle de la situation financière de la Municipalité de Terrasse-Vaudreuil au 31 décembre 2019, ainsi que des résultats de ses activités, de la variation de ses actifs financiers nets (sa dette nette) et de ses flux de trésorerie consolidés pour l'exercice terminé à cette date conformément aux normes comptables canadiennes pour le secteur public. »*

### Rapport financier 2019

L'exercice financier 2019 s'est soldé par un excédent consolidé de 189 495,00 \$, résultant de recettes consolidées se chiffrant à 3 893 705,00 \$, comparativement aux dépenses consolidées et affectations consolidées de 3 704 210,00 \$ tel qu'audité par le vérificateur. Ce rapport financier se retrouve sur le site Web de la Municipalité de Terrasse-Vaudreuil.

En conclusion, le rapport financier, au 31 décembre 2019, démontre que la municipalité est en bonne situation financière.

Michel Bourdeau, maire



## COUNCIL MEETINGS

Regular Council meetings are held at the Community Center.

Meetings start at 7:30 p.m.

**Due to the preventive measures taken to counter the spread of COVID-19, future sessions may be held behind closed doors.**

### COUNCIL MEETINGS SCHEDULE

- Tuesday, September 8, 2020
- Tuesday, October 13, 2020
- Tuesday, November 10, 2020
- Tuesday, December 8, 2020
- Tuesday, January 19, 2021
- Tuesday, February 9, 2021
- Tuesday, March 9, 2021
- Tuesday, April 13, 2021

There will be a budget meeting at the end of the year.

## Your MUNICIPAL COUNCIL



**Mrs. Nathalie Perreault**

Councillor, Seat 1

[nathalie.perreault@terrasse-vaudreuil.ca](mailto:nathalie.perreault@terrasse-vaudreuil.ca)



**Mr. Julien Leclerc**

Councillor, Seat 2

[julien.leclerc@terrasse-vaudreuil.ca](mailto:julien.leclerc@terrasse-vaudreuil.ca)



**Mr. Jean-Pierre Brazeau**

Councillor, Seat 3

[jpierre.brazeau@terrasse-vaudreuil.ca](mailto:jpierre.brazeau@terrasse-vaudreuil.ca)



**Mrs. Audrey Dépault**

Councillor, Seat 4

[audrey.depault@terrasse-vaudreuil.ca](mailto:audrey.depault@terrasse-vaudreuil.ca)



**Mr. Jimmy Robert**

Councillor, Seat 5

[jimmy.robert@terrasse-vaudreuil.ca](mailto:jimmy.robert@terrasse-vaudreuil.ca)



**Mr. Yves de Repentigny**

Councillor, Seat 6

[yves.derepentigny@terrasse-vaudreuil.ca](mailto:yves.derepentigny@terrasse-vaudreuil.ca)

## NEW WEBSITE FEATURES

We have done a complete overhaul of the municipality's website. You can now subscribe to our **newsletter** to receive **emergency alerts** and/or the **latest news** from your municipality.

This new site offers more intuitive navigation options so that you can easily find the information you are looking for, such as library or municipal skating rink schedule, taxation, obtaining permits, minutes of council meetings, etc.

## CITY HALL

74, 7<sup>th</sup> Avenue  
Terrasse-Vaudreuil QC J7V 3M9  
**Telephone:** 514 453-8120  
**Fax:** 514 453-1180

**Email:**  
[info@terrasse-vaudreuil.ca](mailto:info@terrasse-vaudreuil.ca)

**Website:**  
[www.terrasse-vaudreuil.ca](http://www.terrasse-vaudreuil.ca)

## REGULAR SCHEDULE

**Monday to Friday**  
8:30 a.m. to noon  
1 p.m. to 4:30 p.m.

**STATUTORY HOLIDAY**  
(Offices closed)

- Monday, October 12, 2020

### HOLIDAYS

The offices will be closed from  
December 19, 2020 to  
January 3, 2021 inclusively.

### MUNICIPAL TAXES 2020

- 1<sup>st</sup> installment: **February 19**
- 2<sup>nd</sup> installment: **August 19**
- 3<sup>rd</sup> installment: **November 19**

### NEW BABY? NEW RESIDENT?

Information and gifts from civic  
organizations and local businesses.

*Votre panier de bienvenue*

**Julie Duchesne Cormier**

[votrepanierdebienvenue@hotmail.com](mailto:votrepanierdebienvenue@hotmail.com)  
514 716-7726

Facebook : [votrepanierdebienvenue](https://www.facebook.com/votrepanierdebienvenue)

## EMERGENCY DIRECTORY

<b>POLICE - AMBULANCE - FIRE (immediate emergency)</b>	<b>9-1-1</b>
INFO-SANTÉ (phone consult with a nurse)	8-1-1
BELL CANADA (wires fallen on the road)	6-1-1
TRANSPORTS QUÉBEC (road network conditions)	5-1-1
MUNICIPAL INTERVENTION (Broken water main, flooding, road or traffic sign issues, etc.)	3-1-1
POISON CONTROL CENTER	1 800 463-5060
CN RAILWAY POLICE (gate 23.57 Kingston subdivision)	1 800 465-9239
CP RAILWAY POLICE (gate 18.07 Vaudreuil subdivision)	1 800 465-9239
CRIME STOPPERS	1 800 711-1800
COAST GUARD (vessel in distress)	*16
GAZ MÉTROPOLITAIN - INFO EXCAVATION	514 286-9228
HYDRO-QUÉBEC (power outage)	1 800 790-2424
SÛRETÉ DU QUÉBEC - non urgent issues	310-4141 or *4141
SÛRETÉ DU QUÉBEC - administration (599, Harwood, Vaudreuil-Dorion)	450 424-1212

## HEALTH CARE DIRECTORY

MEDICAL CLINICS	
CLSC - VAUDREUIL-DORION (3031, de la Gare boul., Vaudreuil-Dorion)	450 455-6171
TROIS-LACS MEDICAL CLINIC (65, Cité des Jeunes, Vaudreuil-Dorion)	450 455-3322
ÎLE-PERROT MEDICENTRE (401, Grand boul., Ile-Perrot)	514 453-1100
POLYCLINIQUE MÉDICALE VAUDREUIL (600, Harwood, Vaudreuil-Dorion)	450 455-9301
HOSPITALS	
DU SUOÎT HOSPITAL (150, St-Thomas, Salaberry-de-Valleyfield)	450 371-9920
LAKESHORE GENERAL HOSPITAL (160, Stillview, Pointe-Claire)	514 630-2225

## TERRASSE-VAUDREUIL DIRECTORY

ANIMALS	
NICHOIR DE HUDSON (injured wild birds)	450 458-2809
SERVICES QUÉBEC (injured birds of prey)	1 877 644-4545
SERVICES QUÉBEC (suspicious or sick wild animals)	1 877 644-4545
AGENCE CANADIENNE D'INSPECTION (dead wild animals)	450 246-4125
CONTRÔLE ANIMAL VAUDREUIL-SOULANGES (lost or wandering pets)	450 510-1508
MISCELLANEOUS	
ÉCOLE JOSÉ-MARIA (elementary school)	514 453-8201
REGIONAL HOUSING BUREAU OF VAUDREUIL-SOULANGES	450 218-6994
REPAS PARTAGÉS DE TERRASSE-VAUDREUIL (senior social group)	514 453-3624
SCHOOL BOARD TAXES	
COMITÉ DE GESTION DE LA TAXE SCOLAIRE DE L'ÎLE DE MONTRÉAL (anglophone school board)	514 384-5034
COMMISSION SCOLAIRE DES TROIS-LACS (francophone school board)	514 477-7000 Ext. 1830
PUBLIC TRANSIT	
EXO - Réseau de transport métropolitain (bus, train, adapted transit)	514 287-TRAM

# ADMINISTRATION

## COMPLAINTS *and* SUGGESTIONS

All complaints should be submitted in writing, in a sealed envelope and delivered to the City Hall. Your complaint must include the following information:

- ⇒ Full name
- ⇒ Address
- ⇒ Telephone number
- ⇒ Specific details of the problem
- ⇒ Specific location of the problem
- ⇒ Date(s) of the event(s), if known
- ⇒ Signature of the plaintiff

**ANONYMOUS COMPLAINTS WILL NOT BE CONSIDERED.**

Under no circumstances will it be tolerated for any citizen to call or go directly to the homes of our municipal employees.

For any emergency, we kindly ask you to refer to pages 4, 9, 12, 15 and 17 of this issue.

## MUNICIPAL TAXES

During this pandemic period, we strongly encourage the payment of taxes through your financial institution's website. You can also deposit your checks in the mail slot located to the right of the main entrance. Note that the last installment is due on November 19, 2020.

**L** **PETER SCHIEFKE**  
Député | Member of Parliament  
VAUDREUIL-SOULANGES

450-510-2305  
Peter.Schiefke@parl.gc.ca  
223 Av. Saint-Charles  
Vaudreuil-Dorion J7V 2L6

**Marie-Claude NICHOLS**  
DÉPUTÉE DE VAUDREUIL

ASSEMBLÉE NATIONALE DU QUÉBEC

**polymos**  
Thermoplastiques expansés  
Expanded Thermoplastics

Où les idées prennent forme...  
We shape ideas with foam...

[polymos.com](http://polymos.com)

Les citoyens qui désirent recevoir, par la poste, une copie de l'Info Terrasse en anglais, doivent s'inscrire à la liste d'envoi en composant le 514 453-8120, poste 221. Des copies en anglais sont aussi disponibles à l'hôtel de ville et en ligne sur notre site Internet sous l'onglet **Bulletins municipaux**.

*Citizens who wish to receive an English version of the Info Terrasse by mail must contact us at 514 453-8120, Ext. 221 to register on the mailing list. English copies are also available at City Hall and online at [www.terrasse-vaudreuil.ca/Bulletins municipaux/](http://www.terrasse-vaudreuil.ca/Bulletins_municipaux/)*

# BY-LAWS

## MUNICIPAL BY-LAW

### NUISANCES—RÈGLEMENT NUMÉRO 656 Règlement sur les nuisances - RMH 450

#### ACTIVITÉS NUISIBLES

Constitue une nuisance et est prohibé le fait, pour toute personne, d'utiliser ou de permettre que soient utilisés une tondeuse à gazon, un tracteur à gazon, un coupe-bordure, une scie à chaîne, une souffleuse à feuilles, à tout autre moment qu'aux heures permises ci-dessous mentionnées. Le présent article ne s'applique pas aux souffleuses à neige, ni aux bruits résultants de travaux d'utilité publique, de travaux d'urgence visant à sauvegarder la sécurité des lieux ou des personnes.

#### Heures permises :

Du lundi au vendredi de 7 h à 21 h

Le samedi et les jours fériés de 8 h à 16 h

Le dimanche de 10 h à 16 h.

#### NUISANCE SUR LA VOIE PUBLIQUE

Constitue une nuisance et est prohibé le fait, pour toute personne, de :

déposer, laisser ou maintenir des branches destinées à la collecte des branches à tout autre moment qu'à la période permise ci-dessous mentionnée :

#### Période permise :

Trois (3) jours avant la collecte;

déposer, laisser ou maintenir un bac roulant destiné à la collecte sélective des matières recyclables à tout autre moment qu'à la période permise ci-dessous mentionnée :

#### Période permise :

À partir de 16 h la veille de la collecte jusqu'à midi le lendemain de la collecte;

déposer, laisser ou maintenir un bac roulant destiné à la collecte des matières organiques à tout autre moment qu'à la période permise ci-dessous mentionnée :

#### Période permise :

À partir de 16 h la veille de la collecte jusqu'à midi le lendemain de la collecte;

déposer, laisser ou maintenir un contenant, bac ou bac roulant, sac destiné à la collecte des résidus verts à tout autre moment qu'à la période permise ci-dessous mentionnée :

#### Période permise :

À partir de 16 h la veille de la collecte jusqu'à midi le lendemain de la collecte;

déposer, laisser ou maintenir un contenant, bac ou bac roulant, sac destiné à la collecte des feuilles à tout autre moment qu'à la période permise ci-dessous mentionnée :

#### Période permise :

À partir de 16 h la veille de la collecte jusqu'à midi le lendemain de la collecte;

déposer, laisser ou maintenir un contenant, bac ou bac roulant destiné à la collecte des déchets domestiques à tout autre moment qu'à la période permise ci-dessous mentionnée :

#### Période permise :

À partir de 16 h la veille de la collecte jusqu'à midi le lendemain de la collecte.

Anyone who contravenes this by-law commits an offense and is  
liable to a fine of not less than \$200 plus fees.





# BY-LAWS

## MUNICIPAL BY-LAW

### EAU DE L'AQUEDUC—RÈGLEMENT NUMÉRO 562

#### Règlement concernant l'usage de l'eau de l'aqueduc municipal

L'utilisation de l'eau provenant de l'aqueduc municipal pour l'arrosage des pelouses, jardins, fleurs, arbres, arbustes et autres végétaux est défendu entre le 1<sup>er</sup> mars et le 1<sup>er</sup> novembre de chaque année, sauf entre 19 h et 21 h, les jours suivants :

- Pour les occupants des bâtiments dont le numéro civique est un nombre impair : les dates impaires;
- Pour les occupants des bâtiments dont le numéro civique est un nombre pair : les dates paires;
- Il est prohibé de laisser l'eau provenant de l'arrosage ruisseler dans la rue ou sur une propriété voisine.

L'arrosage des fleurs annuelles ainsi que des jardinières suspendues est permis à tous les jours de 19 h à 21 h.

#### Permis—Arrosage

Une personne qui installe ou ensemence une nouvelle pelouse peut, pourvu qu'elle détienne un permis émis à cette fin au coût de 40 \$ par la Municipalité et après avoir payé le tarif, procéder à l'arrosage de cette nouvelle pelouse entre 19 h et 21 h, chaque jour durant une période de quinze (15) jours consécutifs, à compter du début des travaux d'installation ou d'ensemencement, *à l'exception de la période d'interdiction d'arrosage*.

#### Permis—Lavage de maison

Le lavage des maisons est autorisé deux (2) fois par année. Le propriétaire doit obtenir, au préalable, un permis à cette fin au coût de 20 \$ en s'adressant à l'hôtel de ville.

**Anyone who contravenes this by-law commits an offense and is liable to a fine of not less than \$100 plus fees.**



## DOOR- *to* -DOOR

To have the right to go door-to-door, regardless of the reason, one must submit a written request to the Municipal Council. Once this one has been approved, a permit authorizing peddling will be issued and the peddler must have this permit in his possession at all times. Insist on seeing it!

If the peddler cannot submit a permit issued by the Municipality of Terrasse-Vaudreuil, it is recommended that you call directly the Sûreté du Québec at 450 424-1212 and provide them with the facts and a description of the individual.

**A list of the people authorized to go door-to-door can be found on our website in the section CONSEIL ET ADMINISTRATION under « COLPORTAGE ».**

**IT'S YOUR HOUSE... DON'T LET JUST ANYONE IN!**

# BY-LAWS

## CAR SHELTERS



Temporary car shelters may only be set up between October 15 and April 15 of the following year.

It is mandatory that such shelters be made of industrial-fabricated metal tubes, be of uniform color, and free of stains and perforations. The distance between the shelter and the road must be no less than 3 meters, and a one-meter right-of-way on the side is mandatory.

A maximum of two (2) temporary single car shelters per housing unit, OR one (1) double temporary car shelter, is authorized per housing unit.

## TEMPORARY SHELTERS

Contact the building inspector with any questions concerning temporary shelters.

## IMMOBILE VEHICLE

### *Running engine*

Extract from by-law 660 entitled *Règlement relatif à la circulation – RMH 399.*

***À compter du 1<sup>er</sup> août 2020, il sera interdit à quiconque de laisser le moteur de son véhicule en marche au ralenti pour une durée supérieure à :***

- *trois (3) minutes, par période de soixante (60) minutes, sous réserve des paragraphes 2 et 3;*
- *cinq (5) minutes, par période de soixante (60) minutes, dans le cas d'un véhicule lourd dont le moteur est alimenté au diesel, sous réserve du paragraphe 3;*
- *dix (10) minutes, par période de soixante (60) minutes, pour un véhicule lourd dont le moteur est alimenté au diesel, entre la période du 1<sup>er</sup> novembre au 31 mars de l'année suivante.*

**Certain exceptions are intended, consult our website to know more.**

## WINTER PARKING

Please be advised that parking is prohibited on municipal streets between **midnight and 7 a.m. between November 15 and April 1 inclusively.** Parking is also prohibited during emergency snow removal operations.

# PAULAUTO

**514-453-2177**

144A - 5<sup>e</sup> Boulevard  
Terrasse-Vaudreuil  
J7V 5M3

Paul Lauzon

# LOCATION IDÉAL

PLUS QUE DES OUTILS

Laval  
520, Place Forand  
450 622-2333

Vaudreuil-Dorion  
1085, Route Harwood  
514 919-5507

# PUBLIC SAFETY

## DEFECTIVE GATES



When the gates at the Terrasse-Vaudreuil railway crossing are defective, please contact the Railway Police directly at **1 800 551-2553** and go through the L'Île-Perrot North entrance.

## PUBLIC RAIL SAFETY

Every year in Canada, approximately 300 collisions and trespassing incidents occur at highway/railway crossings and along railway tracks resulting in the death or serious injury of nearly 130 people.

In fact, all of these incidents could have been avoided. Statistics show that **Operation LifeSaver's** education works! We encourage you to visit their website at [www.operationlifesaver.ca](http://www.operationlifesaver.ca), an interesting interactive rail-safety site directed to children, it includes stories, games, audio and visual clips, posters and safety tips.

Whether on foot or in a vehicle, the only place you should ever cross railway tracks is at an authorized and properly marked crossing. When you approach or cross a railway track, look and listen for another train approaching from either direction. Never drive around the gates. If the gate is down, or in the process of being raised or lowered, do not cross the tracks.

**USE EXTRA CAUTION AT THE RAILWAY CROSSING**

## ALERT SYSTEM

You can now subscribe to our newsletter to receive **emergency alerts** and/or the **latest news** from your municipality.

## CRIME STOPPERS

Report a crime anonymously by dialing:

**1 800 711-1800**



**Crime Stoppers** is a non-profit organization formed by active volunteers dedicated to establishing well-being within their community. They offer to police forces a method to receive information from the public in their efforts to prevent crime. These efforts conclude in various criminal arrests, seizure of stolen goods and drugs.



**Goudreau Poirier Inc.**

Société de comptables professionnels agréés  
Business corporation of chartered professional accountants

Téléphone : 450 455-7202  
info@goudreaupoirier.com

Télécopieur : 450 455-9780

**Savard**  **Sauv **  
notaires associ es

M<sup>e</sup> Chantal Savard  
Notaire et M diateur familial

T l : 514 453-6271  
Fax : 514 453-4419  
@ : csavard@savardsauve.com

17, boul. Cit -des-Jeunes Est, bureau 230  
Vaudreuil-Dorion, Qu bec  
J7V 0N3



# FIRE PREVENTION

## PROTECT YOURSELF AGAINST HOUSE FIRES



Neglect, distraction and recklessness are the causes of the majority of home fires. You can protect yourself against fires with simple actions:

- Install at least one smoke alarm per floor, including the basement;
- Check their operation regularly;
- Make an evacuation plan for your home;
- Practice evacuating it.

## ACCESSIBLE EXITS

During a fire, you may have less than three minutes to get out of your house. Imagine the precious seconds you could lose if your exits are filled with snow or obstructed by something!

- After each snowfall, you should shovel the snow away from any exits, balconies or terraces.
- Inside your home, make sure the circulation areas such as corridors and stairs, are always free of any objects especially toys, shoes or schoolbags.
- Clear the exits of any bulky objects such as shovels, snow blower, patio furniture, etc.

## CHIMNEY SWEEPING MUST BE DONE YEARLY!



## ADDRESS VISIBILITY

In case of an **EMERGENCY** requiring the assistance of Emergency Services, it is important that your address be visible from the street **day and night**?

**Thank you for helping us ensure your protection!**





# FIRE PREVENTION

## KITCHEN FIRES

In Quebec, more than a quarter of fires in residential buildings, that is 28%, start in the kitchen.

In 40% of cases, these fires are caused by human error and the majority of these are distractions, 84%, involve cooking appliances.

Many unfortunate events such as burns, material loss and even death can be avoided by simple preventive measures.

### Cook with caution

- Always watch food that cooks. Use a timer.
- Never heat oil in a pot for frying, regardless of the type of pot. Use a thermostatic fryer.
- To cook food, use a pan the diameter of or equal to the heating element on the stove. Food spilling onto the element could cause a fire.
- Have a cover within reach. If it is not the container's, make sure it can cover it completely

### Prevent cooking fires

- Turn off cooking appliances when you have to leave the kitchen or your home.
  - Do not store objects in the oven or on the stove top.
  - Keep a portable fire extinguisher near by, a few feet from the stove, for example at the kitchen entrance, and learn how to use it.
  - Keep paper or plastic items and fabrics away from heating elements.
  - Keep oven mitts, in good condition and within reach, but some distance from heating elements.
  - Regularly clean cooking appliances and the range hood. A build-up of fat is a fire hazard.
- 
- ➞ If you have a self-cleaning oven, clean it regularly.
  - ➞ Do not use the self-cleaning function if a lot of residue has accumulated on the bottom of the oven. They could catch fire because the temperature during cleaning can easily rise to over 480°C (900°F).
  - ➞ Regularly clean the containers under the electrical elements of the cooker.
  - ➞ Clean the inside of the stove hood as well as the outside. The build-up of greasy residue can catch fire.

# PUBLIC WORKS

## 3-1-1

You must immediately inform the Municipality of any problem involving our infrastructures and/or needing the intervention of the Public Works department.



During opening hours contact us at 514 453-8120, Ext. 0 or dial 3-1-1 when our offices are closed.

## SNOW REMOVAL

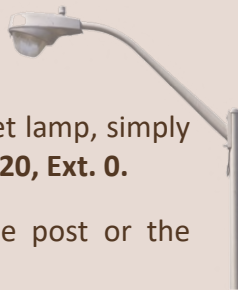


Be advised that the **Municipality will no longer tolerate that snow from private entrances be deposited on**

**the sidewalks, the borders or in the street, near fire hydrants or on any land belonging to the Municipality.**

This practice goes against municipal by-laws and may be punished by a fine. Should it be impossible for you to keep the snow from your parking on your land, it is your responsibility to dispose of it otherwise. If you use a contractor for your snow removal, **you must inform them of this by-law.**

## PUBLIC LIGHTING *network*



To inform us of any defective street lamp, simply contact us by phone at 514 453-8120, Ext. 0.

Have in hand the number on the post or the nearest civic address.

CLIMATISATION  
CHAUFFAGE

**RBC**

SERVICE  
24h

Réparation de système de chauffage à l'huile, au propane, gaz naturel, électrique et thermopompe.

Tel: 514.926.7172 Fax: 514.646.0615

www.climatisationchauffagerbc.com

**BM MANUTENTION** INC.

CONCESSIONNAIRE AUTORISÉ

**HELI**

RÉPARATION DE CHARIOTS ÉLÉVATEURS • FORK LIFT REPAIRS

VENTE • SERVICE • LOCATION / SALES • SERVICE • RENTAL

Site web : [www.bm-manutention.com](http://www.bm-manutention.com)

Réjean Pinet  
Directeur des ventes

144 D, 5e Boulevard, Terrasse-Vaudreuil, Québec • J7V 5M3

Tél. : 514 425-6772 • Fax : 514 425-5272

[rpinet@bm-manutention.com](mailto:rpinet@bm-manutention.com)

Cuisine • Salle de bain  
Kitchen • Bathroom

ÉBÉNISTERIE

*St-Denis*

depuis 1979

102b, 5e Boulevard  
Terrasse-Vaudreuil

514 • 453 • 2017

RBQ: 2141-9288-67

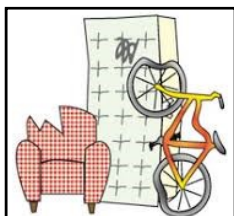
[www.ebenisterie-st-denis.com](http://www.ebenisterie-st-denis.com)

# ENVIRONMENTAL HYGIENE

## HOUSEHOLD WASTE *and* LARGE OBJECTS

Every **TUESDAY**

Construction materials are not accepted in the collection. Most non-compostable and non-recyclable materials can and should now be brought to the ecocentre.



## RECYCLING

Every **THURSDAY**



## ORGANIC WASTE

Every **FRIDAY**



## CARBOARD *special collection*

**JANUARY 7, 2021**



## BINS *positioning*

The garbage, recycling or food waste bins must be placed at the curbside **before 7 a.m.**

It is prohibited to leave the bins outside the permitted period which is from 4 p.m. the evening before the collection and until noon the day after.

### HOW TO PLACE YOUR BIN:

- ➡ Place the bin at a maximum of one (1) meter from the curb;
- ➡ The wheels must be turned toward the building so that the lid opens toward the street;
- ➡ Make sure there is a 60 cm clearance all around the bin;
- ➡ The lid must be closed and items deposited outside the bin will not be picked up.

**BINS NOT POSITIONED PROPERLY OR WITHOUT A LID WILL NOT BE PICKED UP.**

## BINS *maintenance / replacement*

The Municipality of Terrasse-Vaudreuil provides residents with 360-liter blue recycling bins at a cost of \$90 each and 45-liter brown food waste bins at a cost of \$34 each, which can both be ordered at the City Hall.

If one of your bin is broken, please contact us to check if it is still under warranty. You will need to provide us with the serial number located on its side.



**Please note that bins identified by the Vaudreuil-Soulanges logo are municipal property and are associated with an address. If you move, you must leave them on the premises.**

# ENVIRONMENTAL HYGIENE

## BRANCHES

The Municipality offers, free of charge, seasonal monthly branch pickup. The maximum volume accepted is 4' high by 8' long (branches no larger than 4" in diameter).

Tree branches must be neatly piled on your lawn near the curbside, with the cut ends facing the street, **before 7 a.m. on collection days.**

It is strictly forbidden to leave or maintain branches and clippings from bushes and hedges along the street outside the permitted period of **three (3) days before** the collection date.

### **MONDAYS**

**October 5  
November 2**

Roots, vines and  
tree stumps are  
not accepted

## FALL LEAVES

Four (4) collections will be held in fall. **Only paper bags are accepted.**

**Note that no leaves will be picked up with the waste.**



### **THURSDAYS**

**October 22 and 29  
November 5 and 12**

## GREEN WASTE

### **FRIDAYS**

**September 18  
October 2, 16 and 30**

Green waste needs to be placed in paper bags or inside an open bin. No plastic bags will be picked up even if biodegradable. The collect may begin as early as **7 a.m.**

ACCEPTED WASTE	PROHIBITED WASTE
<ul style="list-style-type: none"> <li>➤ Weeds</li> <li>➤ Grass</li> <li>➤ Small branches of less than 1 cm in diameter</li> <li>➤ Hedge or shrub trimmings</li> <li>➤ Flowers and plants</li> <li>➤ Garden and flowerbed debris</li> </ul>	<ul style="list-style-type: none"> <li>➤ <u>Fall leaves</u></li> <li>➤ Branches, tree stumps, logs</li> <li>➤ Soil, stones, gravel</li> <li>➤ Food waste</li> <li>➤ Household waste</li> <li>➤ Ashes</li> </ul>

## PAY IT *forward*

Help community organizations by offering them your clothing, toys, electrical devices, sports items and more. By doing this you will also reduce the quantity of waste.

### **CENTRE D'ACTION BÉNÉVOLE L'ACTUEL**

88, Adèle Street, Vaudreuil-Dorion (Québec) J7V 1S7  
450 455-3331 | [info@lactuel.org](mailto:info@lactuel.org)



**They do not accept furniture.**

### **LE CARREFOUR DE L'ESPOIR**

235, Saint-Joseph Street  
Vaudreuil-Dorion (Québec) J7V 1S7  
450 218-3100

(They can pick-up your furniture)

**They do not accept clothing.**



# ENVIRONMENTAL HYGIENE

## EXPANDED POLYSTYRENE *Recycling* PROGRAM

Polmos is proud of the creation of its new EPS recycling program organized in collaboration with the Municipality of Terrasse-Vaudreuil. Polmos' new recycling program will allow the population to recycle EPS (frequently used as packaging protection for fragile goods) in an eco-friendly way.

Presently, it is not possible to include EPS in the recycling collection despite the fact it has always been 100% recyclable.

**A container, specially identified and accessible at all times, is situated near the entrance to the Community Center.**

### SELECT THE PROPER TYPE OF MATERIAL TO RECYCLE

EPS is a highly environmentally friendly component. It is made of 95% air and is harmless to our air, soil as well as to ground water. EPS contains no CFCs and HCFCs and never did.

#### ACCEPTED

**EPS white and clean packaging-source** (that we often find in the form of packaging of fragile products) **with no food residue, paper, glue, tape, staples, etc.**

#### REFUSED

All other materials that are not accepted to be recycled including: **EPS used as food containers, coffee cups, plates, fast food packaging**, any Styrofoam® product (extruded polystyrene), typically blue or pink like fish or meat packaging groceries.



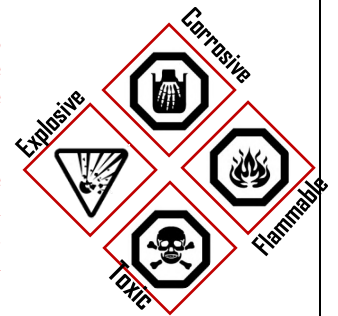
### Please differentiate!

EPS (expanded polystyrene typically white in color) of the XPS (extruded polystyrene, better known as Styrofoam®, which is typically pink or blue). Both are made with polystyrene but are produced through different processes making them different in terms of their physical properties.

## HAZARDOUS HOUSEHOLD WASTE PICKUP (HHW)



The Municipality of Terrasse-Vaudreuil would like to remind you that it is forbidden to mix Hazardous Household Waste with the weekly Household Waste Pickup. We have already encountered an incident where the firefighters had to take action due to a suspicious smoke emanating from a garbage truck. It turned out that an amount of granular Chlorine had been thrown with the household waste and made a reaction combined with another substance, dangerous or not, which resulted in a chemical reaction releasing lots of heat, causing a toxic and corrosive smoke.



**HHW have to be dropped-off at the Ecocenter of Vaudreuil-Dorion and never disposed with your household waste!**

### WHAT TO DO

*In case of* **frozen water pipes**  
or **sewer backup?**

You must immediately inform the Municipality of any problem involving our infrastructures. During opening hours, communicate with us at 514 453-8120 ext. 0 or dial **3-1-1** after office hours.

### **\$50 INCENTIVE** *program* *for the* **conversion** *to* **ecological toilets**

According to **By-law number 557**, every year, for the first 40 residents who submit a request, a refund of \$50 will be allowed to those who exchange their 10-12 L toilets for ecological ones requiring no more than 6 L of water per flush.

# WASTE COLLECTION *calendar*

September 2020						
SUN	MON	TUE	WED	THU	FRI	SAT
		1	2	3	4 	5
6	7	8 	9	10	11	12
13	14	15	16	17	18 	19
20	21	22	23	24	25	26
27	28	29	30			

October 2020						
SUN	MON	TUE	WED	THU	FRI	SAT
				1	2 	3
4	5 	6	7	8	9	10
11	12	13	14	15	16 	17
18	19	20	21	22 	23 	24
25	26	27	28	29 	30 	31

November 2020						
SUN	MON	TUE	WED	THU	FRI	SAT
1	2 	3	4	5 	6	7
8	9	10	11	12 	13	14
15	16	17	18	19	20	21
22	23	24	25	26	27	28
29	30					

December 2020						
SUN	MON	TUE	WED	THU	FRI	SAT
		1	2	3	4	5
6	7	8	9	10	11	12
13	14	15	16	17	18	19
20	21	22	23	24	25	26
27	28	29	30	31		

January 2021						
SUN	MON	TUE	WED	THU	FRI	SAT
					1	2
3	4	5	6	7 	8	9
10	11	12	13	14	15	16
17	18	19	20	21	22	23
24	25	26	27	28	29	30
31						

February 2021						
SUN	MON	TUE	WED	THU	FRI	SAT
	1	2	3	4	5	6
7	8	9	10	11	12	13
14	15	16	17	18	19	20
21	22	23	24	25	26	27
28						

-  Waste and large item collection
-  Food waste collection
-  Cardboard collection
-  Green waste collection

-  Recycling collection
-  Branch collection
-  Leaf collection

**In order to comply with Municipal by-laws,  
refer to page 6 of this publication.**

# HEALTH *and* WELL-BEING

## COVID-19

As you have done so well over the past few months, we encourage you to continue to follow the recommendations made by Public Health. The Covid-19 pandemic can affect people, not only physically, but also psychologically. Stress or anxiety reactions could be experienced. In such cases, we invite you to consult a health or social services professional. However, please be aware that we are also available to assist you where possible.



Contact information for any questions regarding Covid-19:

**1 877 644-4545**

<https://www.quebec.ca/sante/problemes-de-sante/a-z/coronavirus-2019/>

To protect the employees and citizens of our municipality, the City Hall remains closed to the public. You can access it by appointment only by calling 514 453-8120, Ext. 0.

We would also like to remind you that the extended deadline for the 3<sup>rd</sup> installment of municipal taxes is due on November 19, 2020.

CENTRE D'ACOUPHÈNE ET D'HYPO-HYPERACOUSIE  
TINNITUS, HYPO-HYPERACUSIS CENTRE

Évaluation audiolologique  
COMPLÈTE  
à partir de l'âge de 4 ans/  
Complete audiological  
assessment



**Depuis 20 ans! Merci.**

Rendez-vous: 514-425-1554 [centredacouphene.ca](http://centredacouphene.ca)



**ANDREA JOY PETIT**  
DENTUROLOGISTE · DENTURIST

514 453-2350 • [info@andreajoypetitdenturo.com](mailto:info@andreajoypetitdenturo.com)  
6-89, Boulevard Don Quichotte, L'Île-Perrot, Qc, J7V 6X2

# URBAN PLANNING *and* DEVELOPMENT

## PERMITS *and* CERTIFICATES

You plan to do construction or renovation work on your property, install a fence, a swimming pool or a spa in your backyard and you wonder if this work requires a permit or a certificate of authorization?

The Municipality of Terrasse-Vaudreuil would like to remind you that anyone who wishes to proceed with any type of construction or renovation work is responsible of verifying the conformity of their project with the current by-laws and regulations and in order to obtain the authorization from the Municipality **BEFORE** beginning your work.

It will be our pleasure  
to meet with you  
**by appointment only.**

### Contact us

For more information and to obtain the required authorizations, we invite you to communicate with the **Urban Planning, Permits & Certificates Division.**

#### Urban planning Director

Lily Ducharme  
514 453-8120, Ext. 227

#### Building Inspector

William Petrosky  
514 453-8120, Ext. 258





# URBAN PLANNING *and* DEVELOPMENT

## PETS

The Municipality ensures people and pet safety on its territory by means of the animal control. The [Contrôle animal Vaudreuil-Soulanges](#) has the authority to intervene on behalf of the Municipality either by picking up or capturing a lost, injured or dead pet, taking it to the vet, providing it with shelter or putting it up for adoption if it remains unclaimed after **four (4) days**.

**All costs incurred must be paid by the owner.**

BY CIVIC SENSE AND TO RESPECT THE REGULATION, we ask the owners of dogs and cats, not to leave their animal loose.

You must purchase a **MANDATORY** cat or dog licence at the cost of \$30 (for the life of the animal) at City Hall.

**ANIMAL CONTROL: 450 510-1508**

## CANINE BEHAVIOR



**All dogs, regardless of race, will be treated fairly and without discrimination in a case of aggressive behavior. The dog catcher can submit them to an evaluation made by an expert in animal behavior if he deems it necessary.**

## WILD ANIMALS

- Never approach unfamiliar animals (wild or domesticated) even if they appear healthy, or seem to have been abandoned;
- Supervise your children to make sure they do not approach or provoke unfamiliar animals;
- Do not let your pets run wild;
- Do not capture sick wild animals to move them to another location; this could spread the disease to other regions;
- To avoid attracting wild animals onto your property,
  - ⇒ remove all sources of food from around your house;
  - ⇒ keep outdoor garbage cans out of reach;
  - ⇒ block off any areas where raccoons or skunks could settle
  - ⇒ install a wire mesh under balconies and garden sheds.

**CAGES TO CAPTURE WILD ANIMALS ARE AVAILABLE WITH A \$20 DEPOSIT.**



# LEISURE *and* COMMUNITY SERVICES

## LIBRARY *Schedule*

To become a member of the library, you must provide proof of residency.

### REGULAR SCHEDULE

- ➔ MONDAY 7 P.M. TO 9 P.M.
- ➔ WEDNESDAY 7 P.M. TO 9 P.M.
- ➔ SATURDAY 10 A.M. TO 12 P.M.

A full section of English books is available.

## SKATING RINK



MONDAY TO FRIDAY  
4 P.M. TO 9 P.M.

SATURDAY AND SUNDAY  
1 P.M. TO 5 P.M.  
6 P.M. TO 9 P.M.

Regular schedule when the weather allows it.

## SKIEURS *de l'ÎLE*

Join over 1300 ski fanatics travelling more than 30 km of marked out trails! As a Terrasse-Vaudreuil resident, you will benefit of a **\$5 rebate upon registering.**



To learn more, contact Mr. Pierre Levac, President of the "Skiieurs de l'Île" at 514 453-8592. You may also get information by sending an e-mail to [skieursdelile@hotmail.com](mailto:skieursdelile@hotmail.com).

## COMMUNITY GARDENS

WANT TO GROW YOUR OWN GARDEN NEXT SUMMER?

You can contact us by email at:

[jardinonstv@gmail.com](mailto:jardinonstv@gmail.com)

or follow us on Facebook at:

[Agriculture urbaine Terrasse-Vaudreuil](#)

## FINANCIAL AID *policy*

You could probably benefit from our financial aid policies: *Activités physiques des aînés* or *Activités sportives pour les enfants*.

Consult the *Sports et loisirs* section of our website for details.

ACTIVITIES	SCHEDULE	INFORMATION
<b>ZUMBA</b> (FREE TRIAL LESSON)	We will notify you through our website when it is possible to resume this activity.	Valérie Leduc 514 216-4924
<b>LINE DANCING</b> 50 years and over (FREE FOR RESIDENTS)	We will notify you through our website when it is possible to resume this activity.	Murielle Groulx 450 424-4170
<b>BADMINTON</b> (FREE)	We will notify you through our website when it is possible to resume this activity.	Nathalie Perreault 514 425-4936

# RENTAL of the COMMUNITY CENTER

The community center can be rented for activities, meetings, classes or receptions at any time since the school no longer uses the hall as a gymnasium.

Reservations are made at City Hall according to the conditions in force.

Tables and chairs included.



Photo : Olga Cassetta

**ALL ACTIVITIES AND RENTALS ARE CANCELLED TILL FURTHER NOTICE.**

TYPE OF RENTAL		Original French version of by-law 652 supersedes this translation.
Rental for non-profit organizations duly recognized and adopted by the municipal council. (see the register of community organizations)		\$0
Rental to associations, groups or businesses for private activities (corporate or family) or to non-profit organizations not registered in the register of community organizations of Terrasse-Vaudreuil.		\$400
Rental to associations, groups or businesses for private activities (corporate or family) or to non-profit organizations not registered in the register of community organizations by a <b>resident*</b> of Terrasse-Vaudreuil. *upon presentation of proof of residence		\$200
Rental for the <b>funeral reception</b> of a Terrasse-Vaudreuil <b>resident</b> .		\$150
Rental by the hour for training or other courses recognized and approved by a resolution of the Municipal Council.		\$25/hour
Rental to a <b>resident*</b> of Terrasse-Vaudreuil for <b>up to 4 consecutive hours</b> . *upon presentation of proof of residence		\$25/hour
Rental to a <b>resident*</b> of Terrasse-Vaudreuil for <b>more than 4 consecutive hours</b> . *upon presentation of proof of residence		\$200
Rental to a <b>non-resident</b> for <b>up to 4 consecutive hours</b> .		\$60/hour
Rental to a <b>non-resident</b> for <b>more than 4 consecutive hours</b> .		\$400
For any loan or hall rental, a refundable deposit, if need be, is required to guarantee the premises are rendered in the same condition as at the beginning of the activity.		\$100
For any loan or hall rental, a refundable deposit is required to guarantee the return of the key(s) at the end of the rental, as it will be mentioned in the contract.		\$25
<b>OTHER</b>		
Tablecloth rental		\$10 each
Tablecloth replacement		\$15 each
Screen rental		\$50/event



# ÉDITIONS VAUDREUIL

*Avec vous depuis 1965*



**Hamster+**

**Éditions Vaudreuil inc.**

480, boulevard Harwood, Vaudreuil-Dorion, QC J7V 7H4  
Tél. : 450 455-7974 • 1 888 455-7974 • Téléc. : 450 455-1907  
vente@editionsvaudreuil.com • www.editionsvaudreuil.ca  
voir le site : [www.editionsvaudreuil.leslibraires.ca](http://www.editionsvaudreuil.leslibraires.ca)

Membre du  
Réseau



**Les  
libraires**

**PAPETERIE • LIBRAIRIE AGRÉÉE • IMPRIMERIE • CENTRE DE COPIES  
AMEUBLEMENT • JEUX ÉDUCATIFS ET SENSORIELS • CASSÉS-TÊTES • BOUTIQUE CADEAUX**